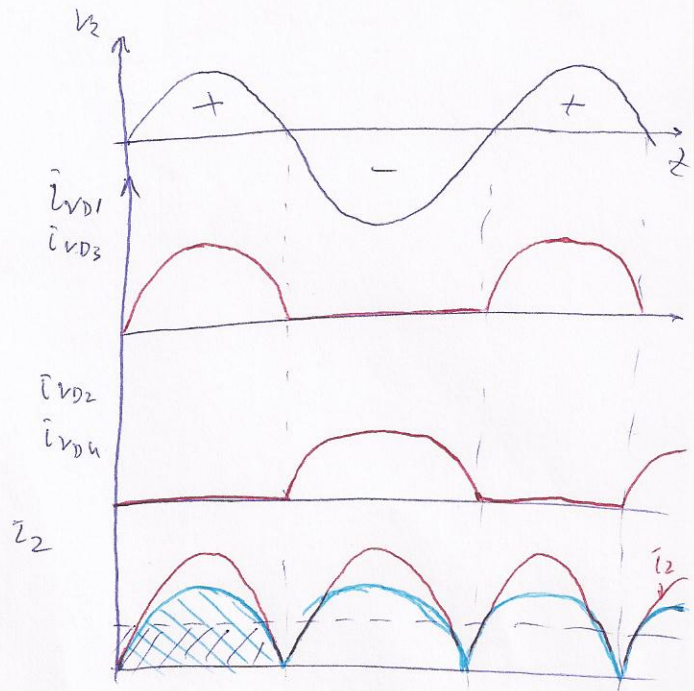
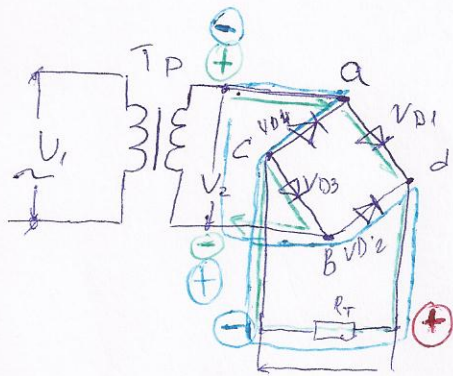
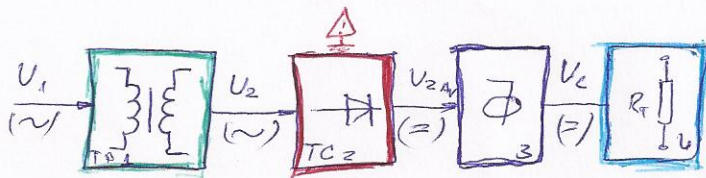


Вопрос 9 Токоизправители

Еднофазни токоизправители

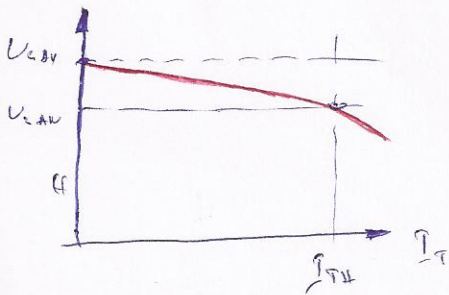
Основна блок схема



$$U_2 = U_{2m} \cdot \sin \omega t$$

$$U_{2AV} = \frac{2}{T_0} \int_0^{T/2} U_{2m} \sin \omega t dt = -\frac{2 U_{2m}}{\omega T} (\cos \omega t) \Big|_0^{T/2} = -\frac{2 U_{2m}}{2 \pi T} \left(\cos \frac{2\pi}{T} \cdot \frac{T}{2} - \cos 0 \right) = \frac{2}{\pi} \cdot U_{2m}$$

ВЪНШНА характеристика на токоизправител



$$\xi = \frac{U_{2AVR} - U_{2AV}}{U_{2AV\#}} \cdot 100\%$$