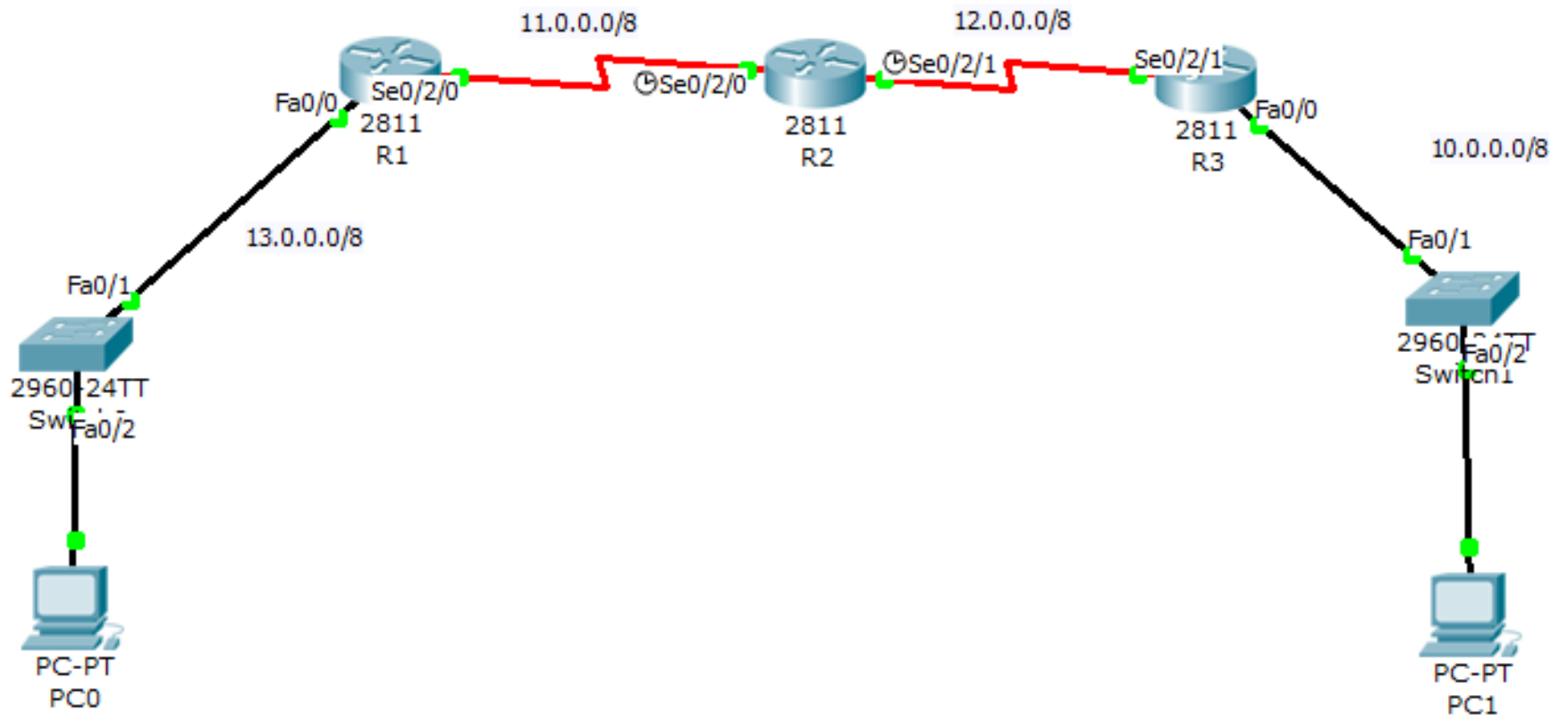




# RIP Timers



# Topology





# Debug

```
Tera Term Web 3.1 - COM4 VT
File Edit Setup Web Control Window Help
R2#debug ip routing
IP routing debugging is on
R2#debug ip rip
RIP protocol debugging is on
R2#
```



# Update from R3

```
Tera Term Web 3.1 - COM4 VT
File Edit Setup Web Control Window Help

R2#debug ip routing
IP routing debugging is on
R2#debug ip rip
RIP protocol debugging is on
R2#
*Jul 11 19:53:05.635: RIP: received v2 update from 11.0.0.1 on Serial0/2/0
*Jul 11 19:53:05.635:      13.0.0.0/8 via 0.0.0.0 in 1 hops
*Jul 11 19:53:26.739: RIP: sending v2 update to 224.0.0.9 via Serial0/2/0 (11.0.
0.2)
*Jul 11 19:53:26.739: RIP: build update entries
*Jul 11 19:53:26.739:      10.0.0.0/8 via 0.0.0.0, metric 1, tag 0
*Jul 11 19:53:26.739:      12.0.0.0/8 via 0.0.0.0, metric 1, tag 0
*Jul 11 19:53:28.435: RIP: sending v2 update to 224.0.0.9 via Serial0/2/1 (12.0.
0.1)
*Jul 11 19:53:28.435: RIP: build update entries
*Jul 11 19:53:28.435:      11.0.0.0/8 via 0.0.0.0, metric 1, tag 0
*Jul 11 19:53:28.435:      13.0.0.0/8 via 0.0.0.0, metric 1, tag 0
*Jul 11 19:53:28.443: RIP: received v2 update from 12.0.0.2 on Serial0/2/1
*Jul 11 19:53:28.443:      10.0.0.0/8 via 0.0.0.0 in 1 hops
```



# Update from R3

```
*Jul 11 19:53:28.443: RIP: received v2 update from 12.0.0.2 on Serial0/2/1
*Jul 11 19:53:28.443:      10.0.0.0/8 via 0.0.0.0 in 1 hops
```





# Update from R3

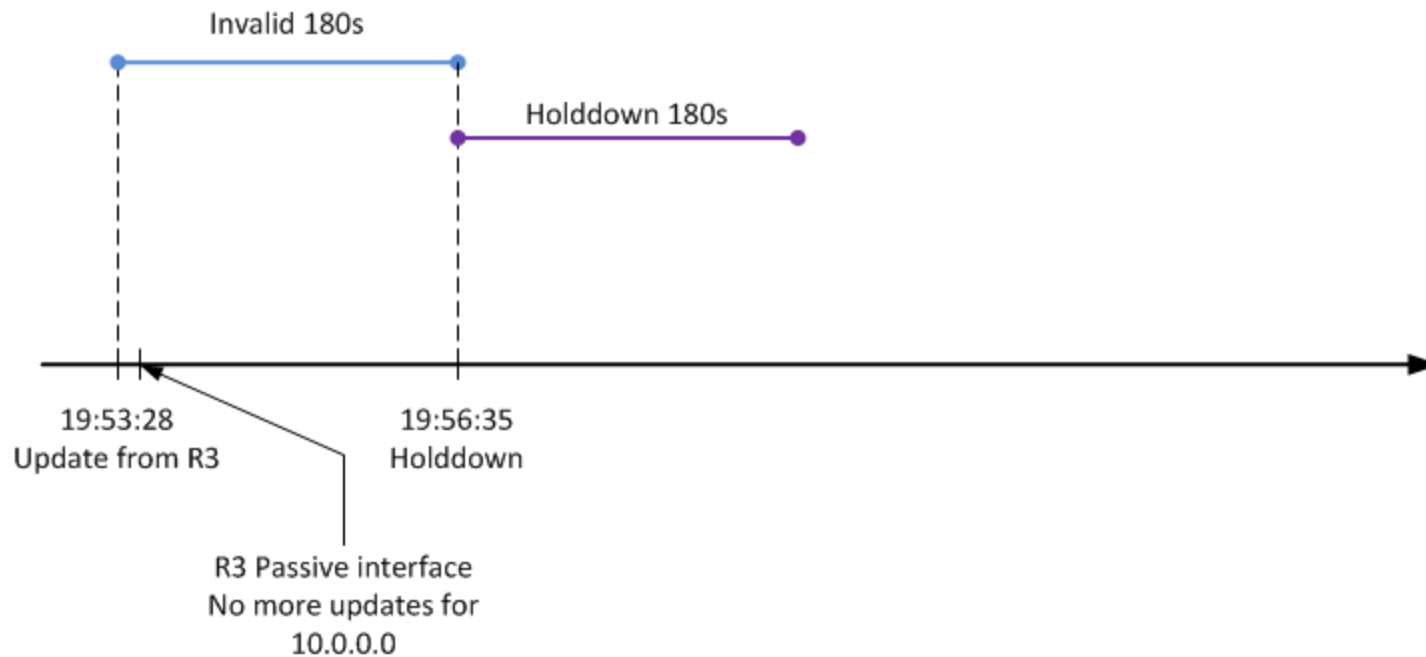
```
R3(config-router)#passive-interface serial 0/2/1
```





# Entering Holddown

```
*Jul 11 19:56:35.475: RT: no routes to 10.0.0.0, entering holddown  
*Jul 11 19:56:35.475: RT: NET-RED 10.0.0.0/8
```





# R2 Triggered Update

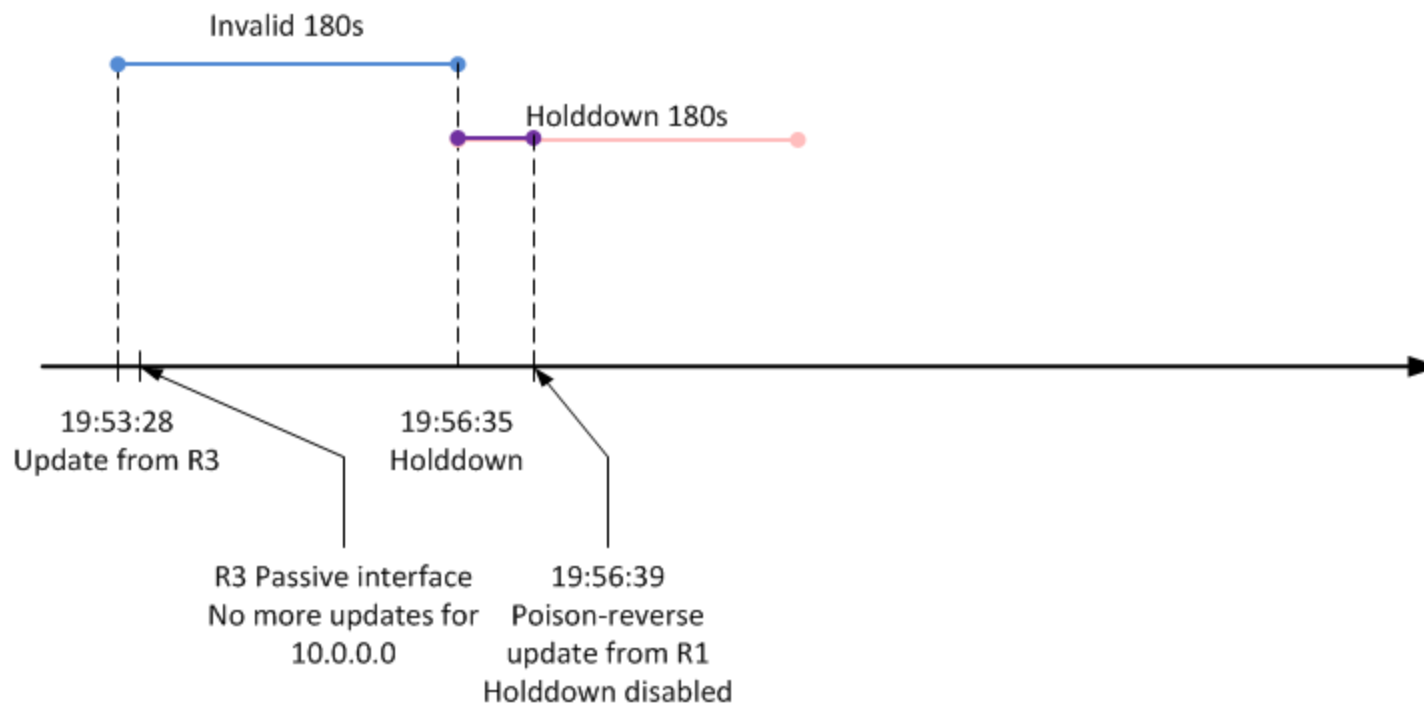
```
*Jul 11 19:56:36.043: RIP: sending v2 update to 224.0.0.9 via Serial0/2/1 (12.0.0.1)
*Jul 11 19:56:36.043: RIP: build update entries
*Jul 11 19:56:36.043:   10.0.0.0/8 via 0.0.0.0, metric 16, tag 0
*Jul 11 19:56:36.043:   11.0.0.0/8 via 0.0.0.0, metric 1, tag 0
*Jul 11 19:56:36.043:   13.0.0.0/8 via 0.0.0.0, metric 1, tag 0
*Jul 11 19:56:37.475: RIP: sending v2 flash update to 224.0.0.9 via Serial0/2/1 (12.0.0.1)
*Jul 11 19:56:37.475: RIP: build flash update entries
*Jul 11 19:56:37.475:   10.0.0.0/8 via 0.0.0.0, metric 16, tag 0
*Jul 11 19:56:37.475: RIP: sending v2 flash update to 224.0.0.9 via Serial0/2/0 (11.0.0.2)
*Jul 11 19:56:37.475: RIP: build flash update entries
*Jul 11 19:56:37.475:   10.0.0.0/8 via 0.0.0.0, metric 16, tag 0
```





# Poison-reverse update from R1

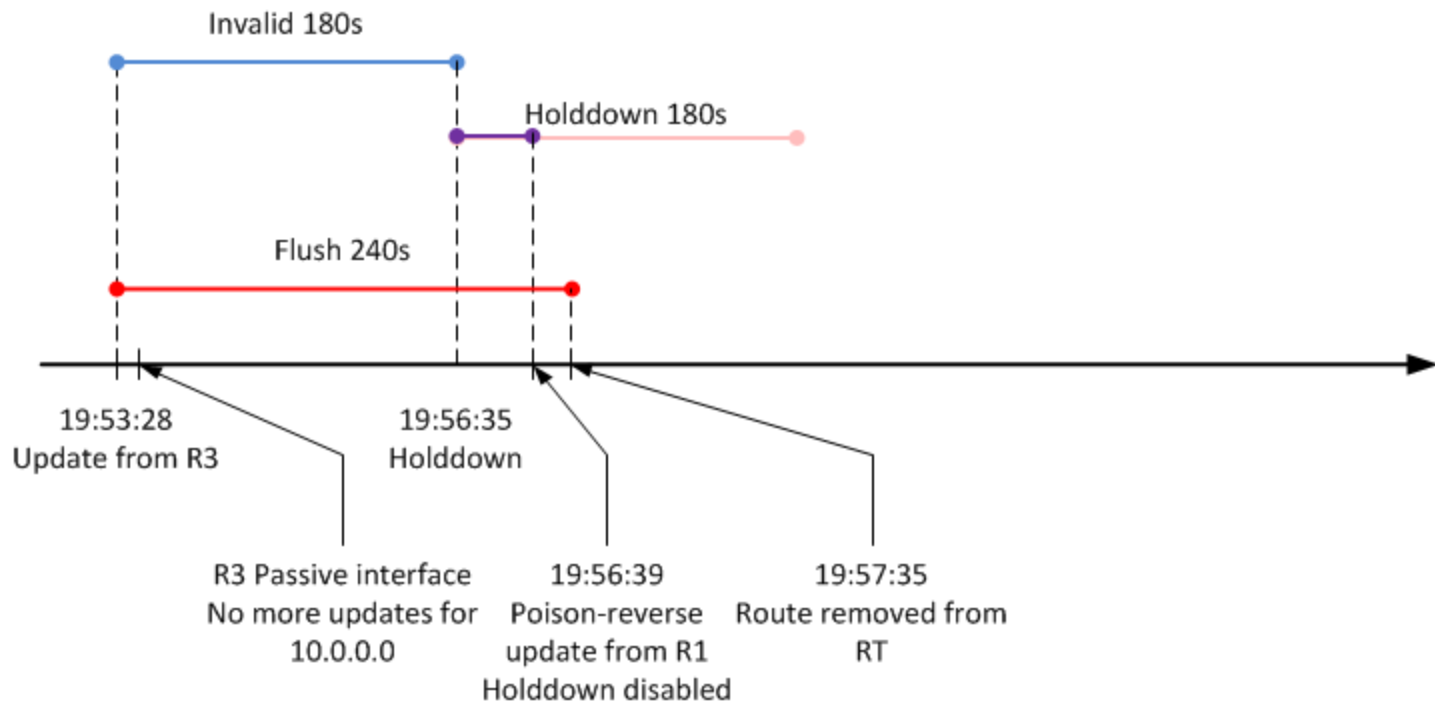
```
*Jul 11 19:56:39.483: RIP: received v2 update from 11.0.0.1 on Serial0/2/0  
*Jul 11 19:56:39.483: 10.0.0.0/8 via 0.0.0.0 in 16 hops (inaccessible)  
*Jul 11 19:56:39.483: RT: 10.0.0.0 came out of holddown
```





# Flush

```
*Jul 11 19:57:35.475: RT: delete network route to 10.0.0.0  
*Jul 11 19:57:35.475: RT: NET-RED 10.0.0.0/8
```





# BLOG

<http://blog.ine.com/2010/04/15/how-basic-are-rip-timers-test-your-knowledge-now/>