

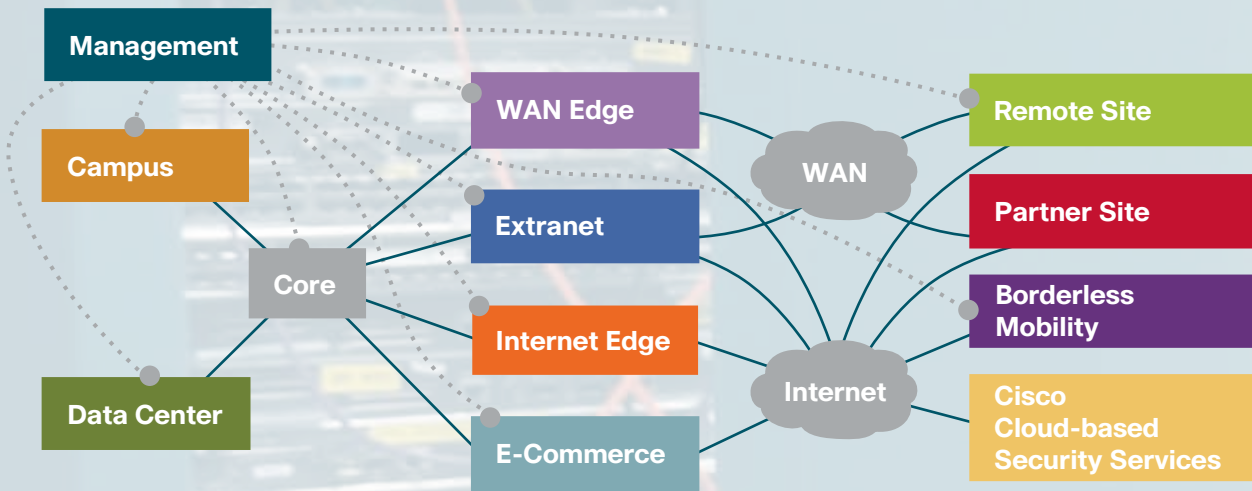


The Cisco
SAFE Security
Reference Architecture

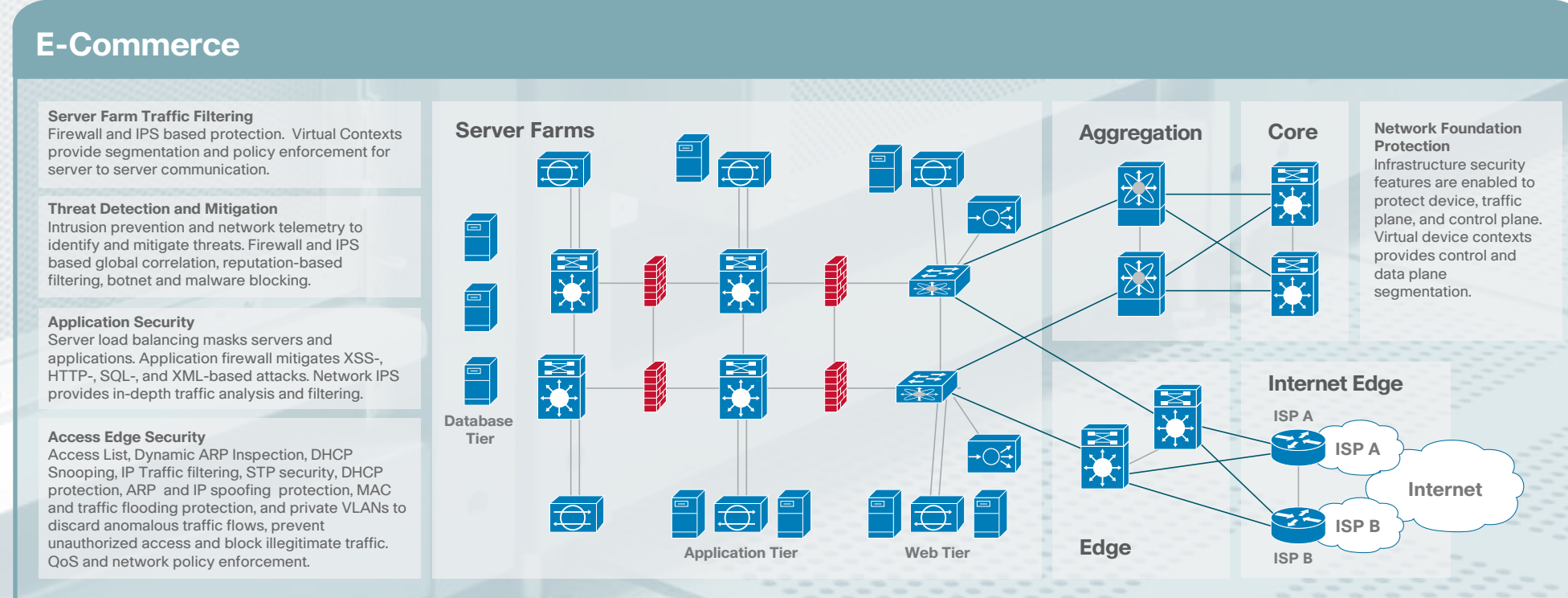
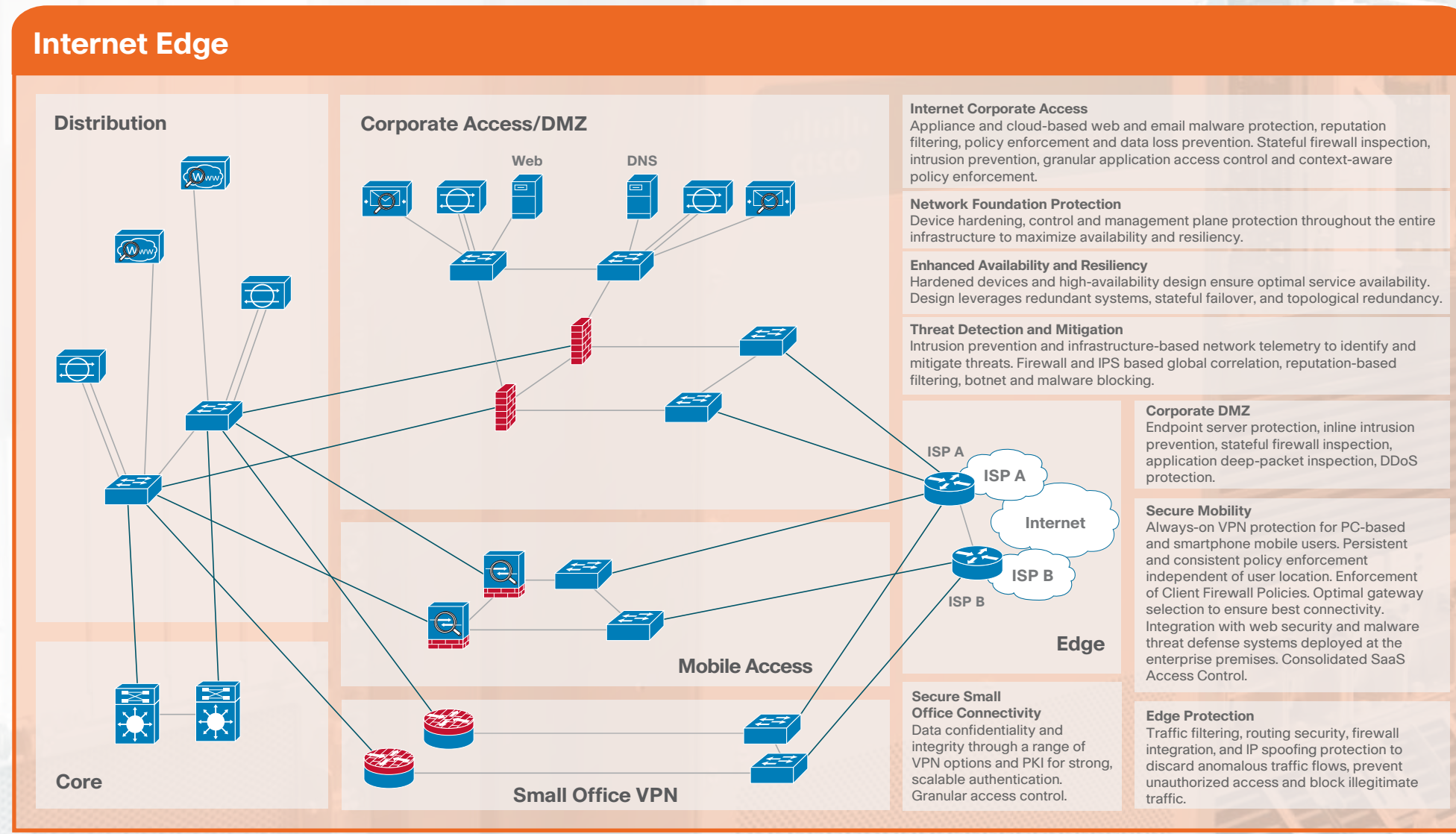
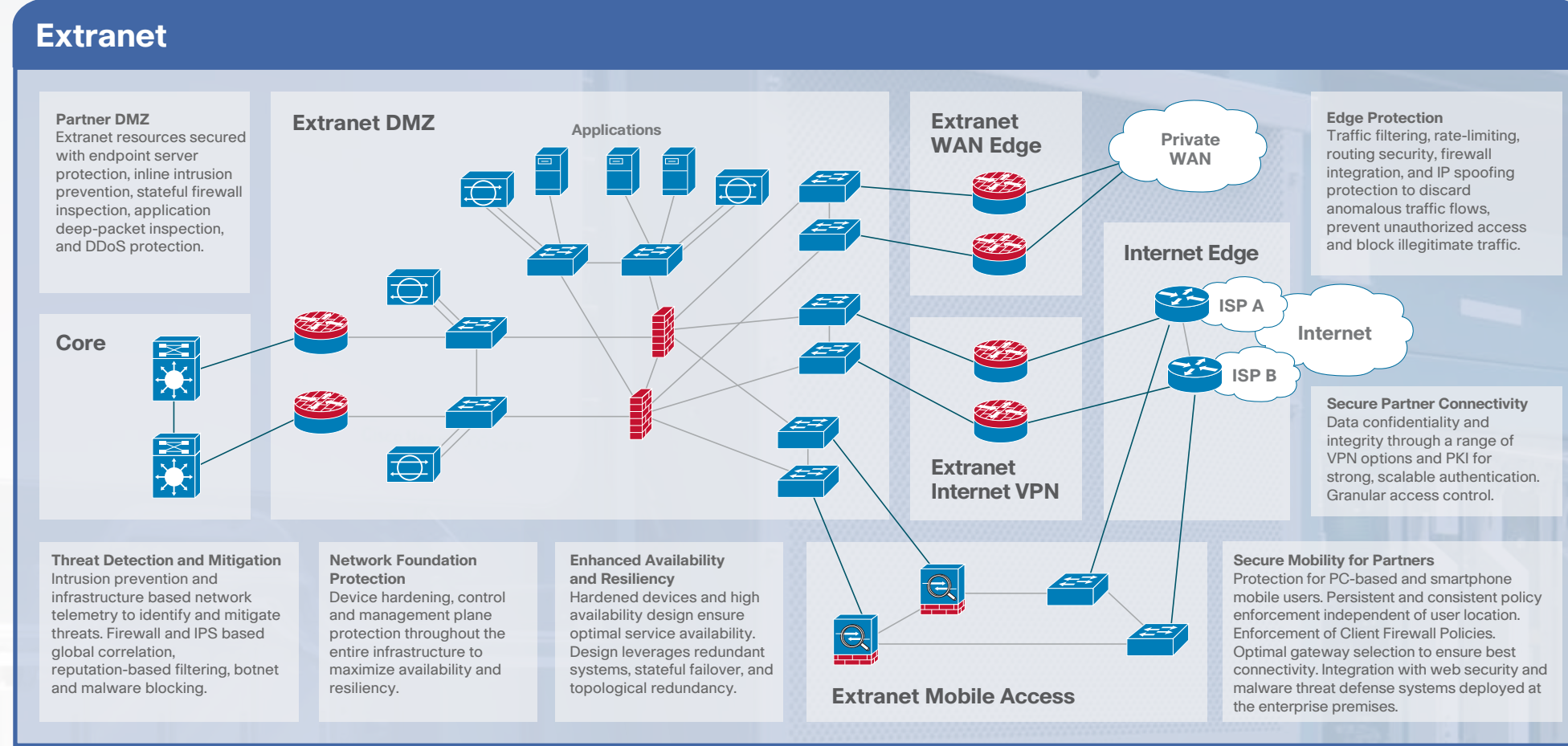
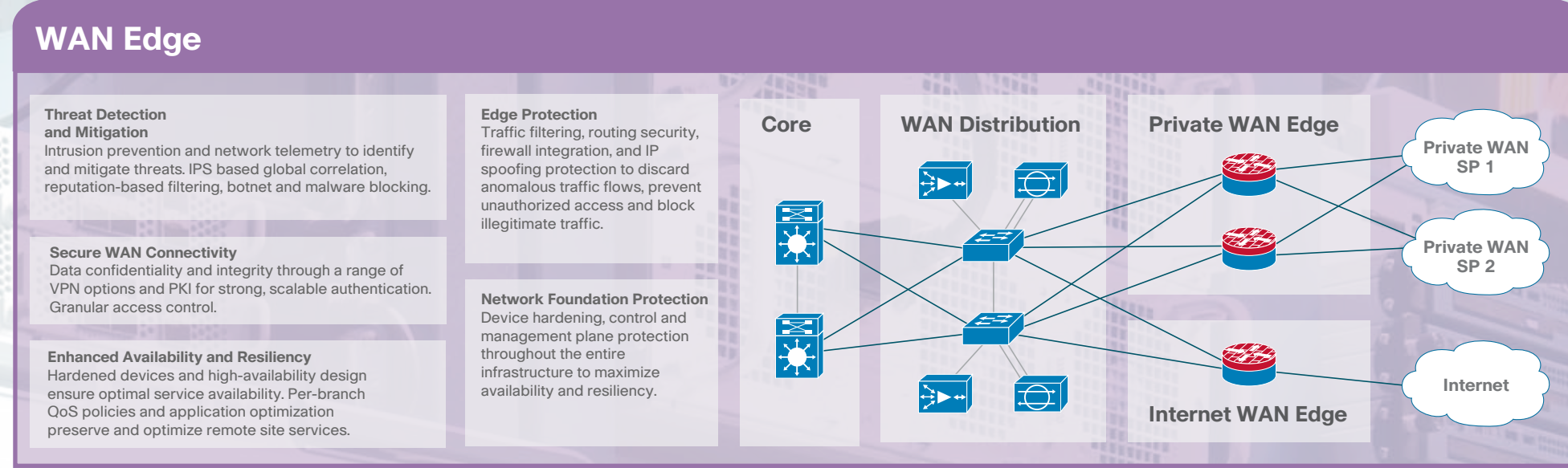
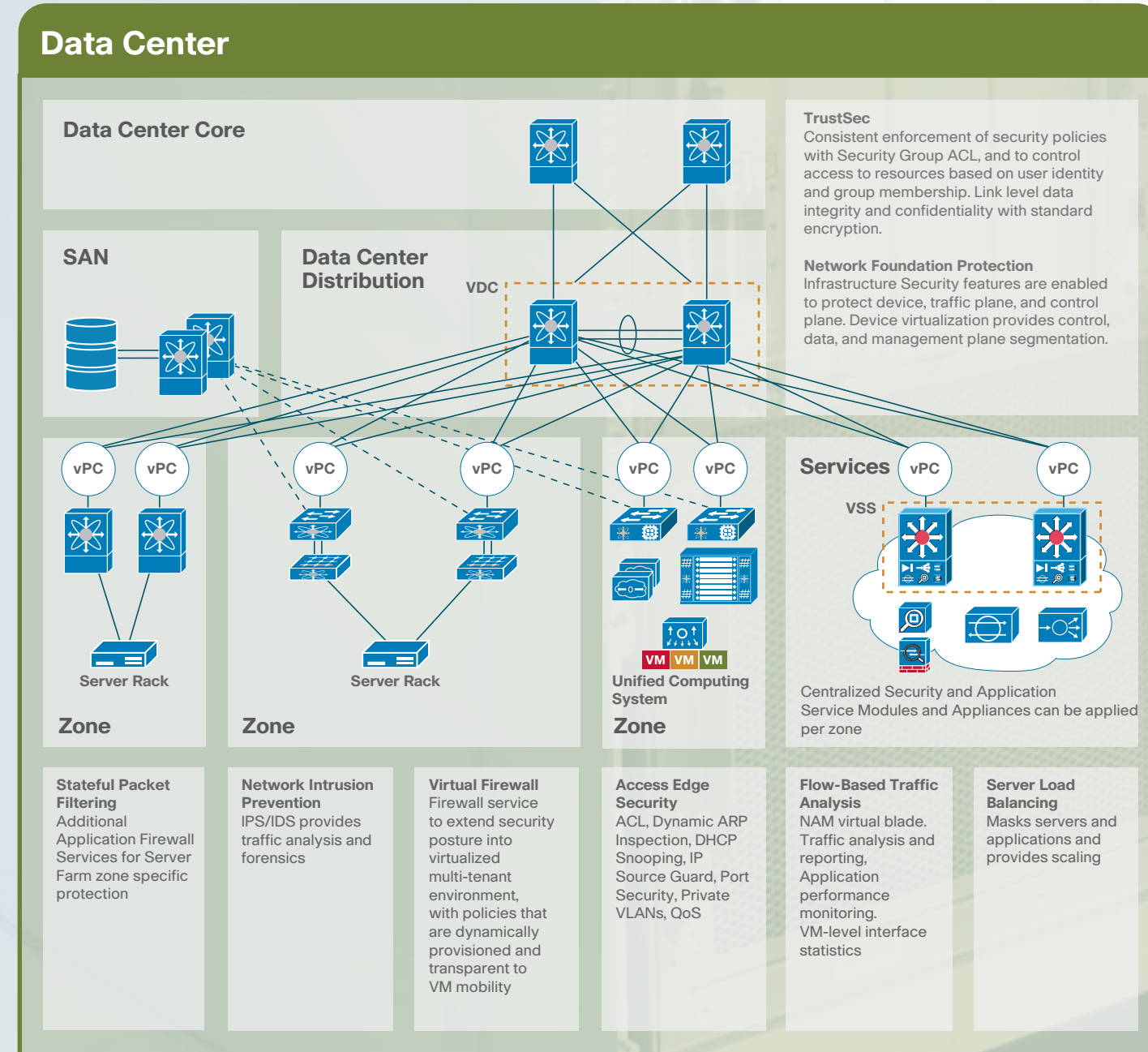
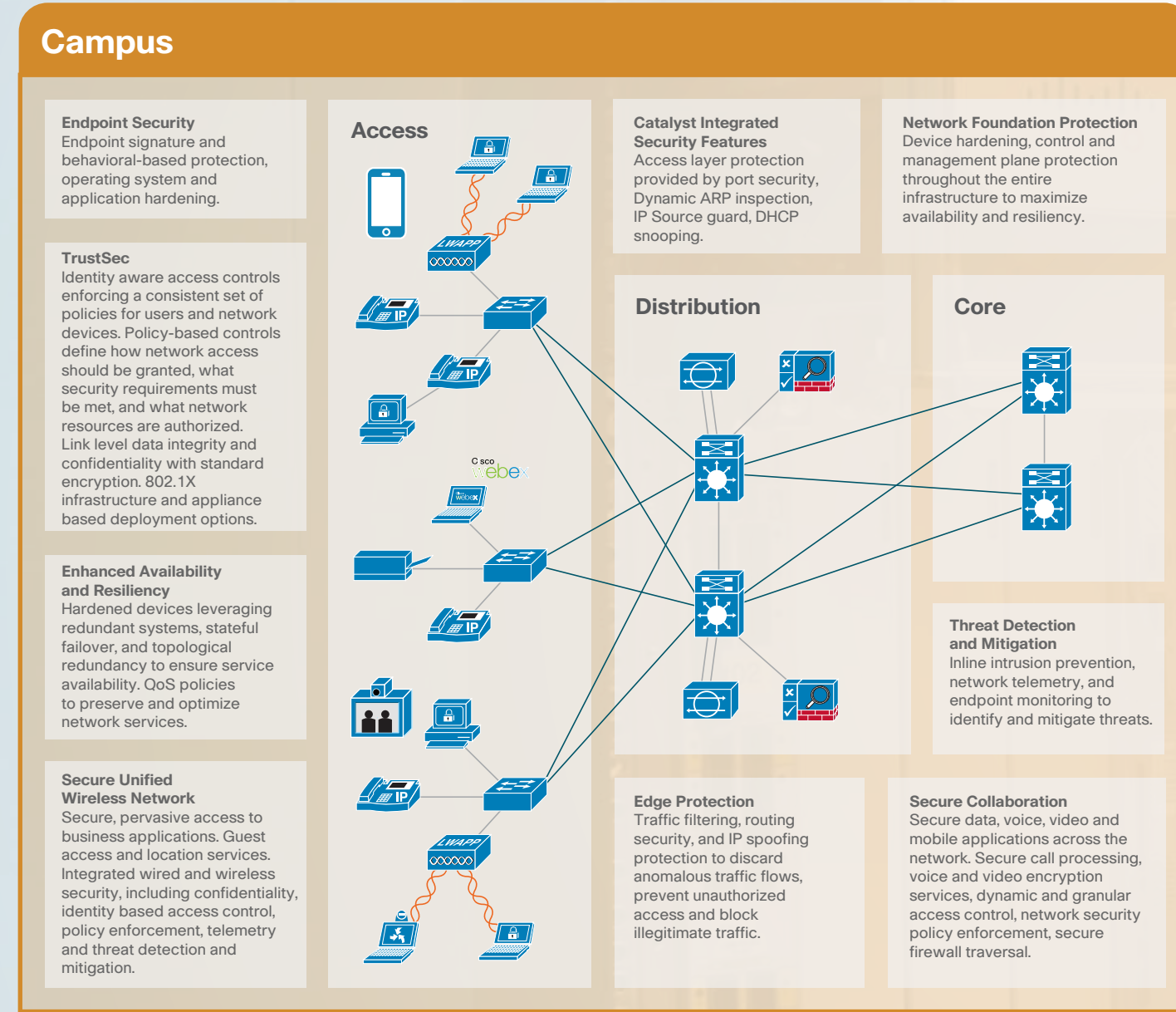
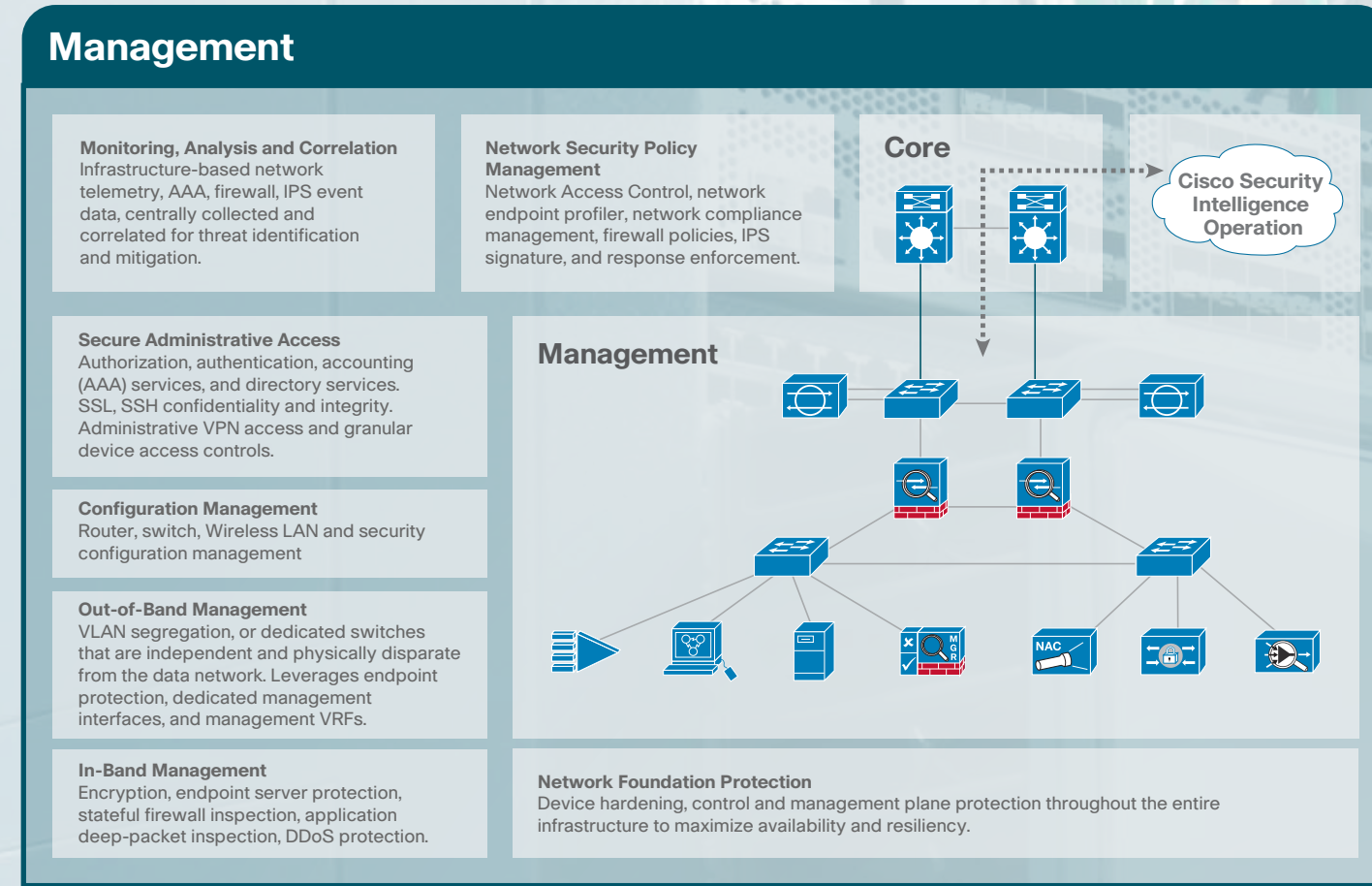
The Foundation for Secure Borderless Networks

Cisco® SAFE is a security reference architecture that provides detailed design and implementation guidelines to assist organizations looking to build highly secure and reliable networks. SAFE's modular designs take advantage of cross-platform network intelligence and collaboration between Cisco security and network devices, to better address the unique security requirements of every part of the network. The SAFE designs also integrate Cisco cloud-based security services, offering flexible deployment options, as well as global threat correlation and response. The result is persistent protection and the consistent enforcement of context-aware security policies for all types of users. This provides greater visibility into device and network security events, and enhanced control of users, devices, and traffic for coordinated threat response. SAFE's comprehensive security strategy improves an organization's ability to identify, prevent, and respond to threats, and securely deploy critical business applications and services.

High-Level View



Icon Key



For More Information
cisco.com/go/safe | cisco.com/go/security

